

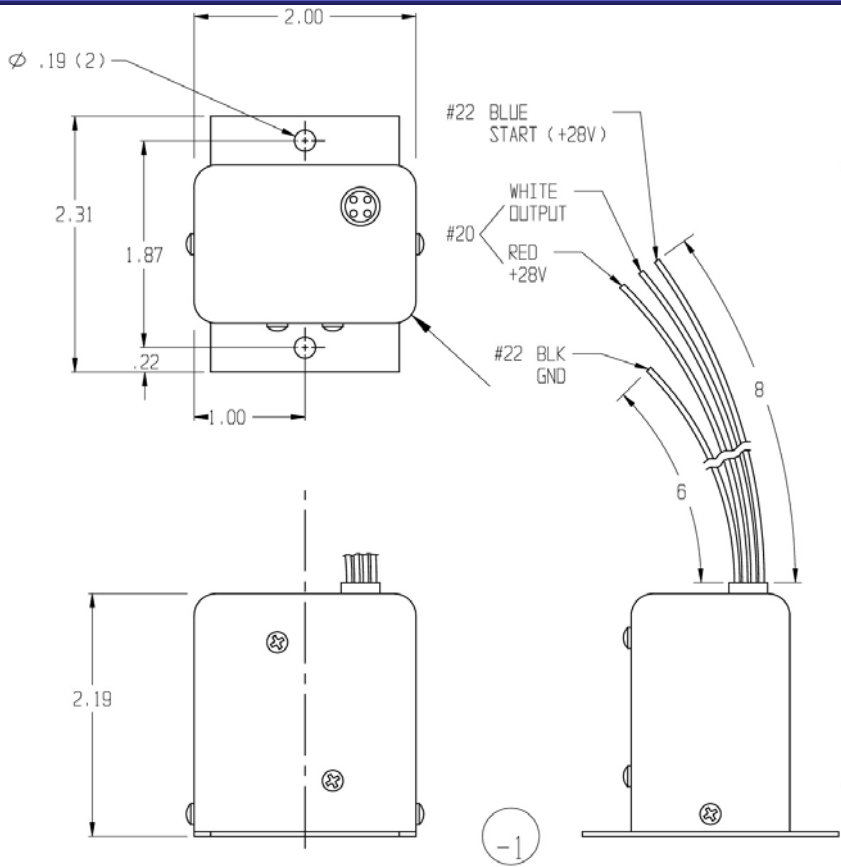


## Technical Data Sheet

B-00325-1	28V TIMER, PNEUMATIC CONTROL
Temperature Altitude Supply Voltage Output Load Weight Dimensions Mounting Dimensions Mounting Holes	-50°C - +60°C 30,000 ft MSL 28V 5A Inductive 0.15 lb. Max. 2.0"L x 2.3"W x 2.2"H 1.87"W Ø 0.19"
PINOUT	FUNCTION
Red Black White Blue	28V Input Power Ground Output 28V Start
OPERATION NOTES	DESCRIPTION
Note 1: Note 2: Note 3: Note 4: Note 5: Note 6:	Unit will not be damaged by shorted output. Output is normally off. Output turn on results from momentary application of +28VDC to start circuit. Output turn off occurs 7.5 seconds ±5% after turn on at 25°C. Output turn off will occur if a start signal is present when 7.5 second delay period expires. Reset is automatic at expiration of time delay or upon removal of a start signal which is present at end of delay period.
PART NUMBER	AIRCRAFT ELIGIBILITY
<b>B-00325-1</b> 488-699	<b>Piper</b> PA-23, PA-23-160, PA-23-235, PA-23-250, PA-23-250 (Navy UO-1), PA-E23-250, PA-31, PA-31-300, PA-31-325, PA-31-350, PA-31P, PA-31P-350, PA-31T, PA-31T1, PA-31T2, PA-31T3

**NOTE:** Installer must cross-check eligibility with applicable technical data.

Data Sheet B-00325-1.A



**NOTE:** Installer must cross-check eligibility with applicable technical data.

Data Sheet B-00325-1.A